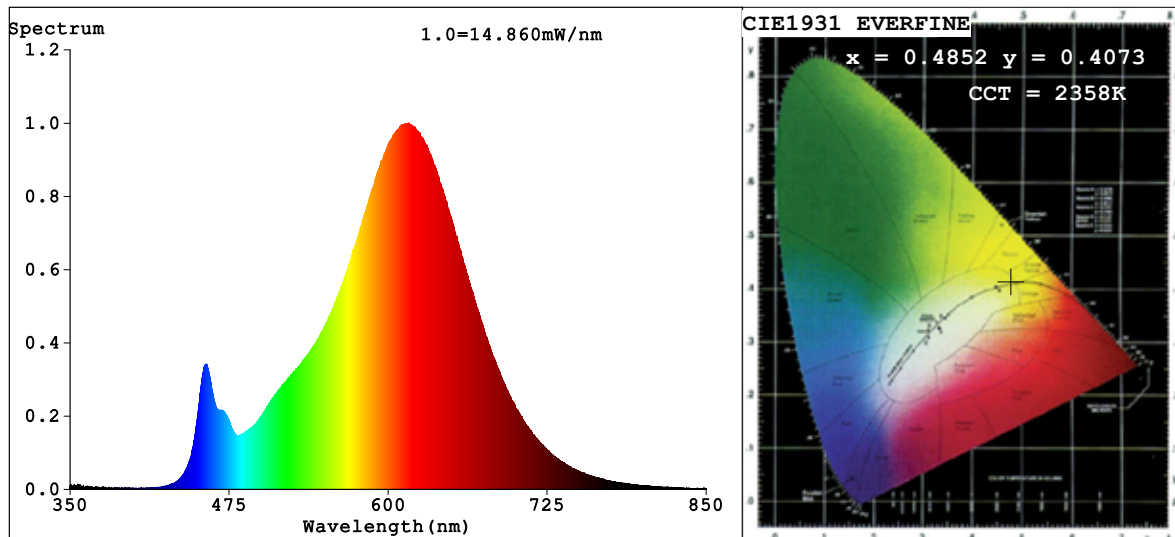


Spectrum Test Report



Color Parameters:

Chromaticity Coordinate: $x=0.4852$ $y=0.4073$ $u'=0.2806$ $v'=0.5300$
 $CCT=2358K$ ($Duv=-0.0025$) Dominant WL: $\lambda_d = 587.0nm$ Purity=67.9%
 Ratio: R=28.9% G=69.0% B=2.1%; Peak WL: $\lambda_p = 616.4nm$ FWHM=112.4nm
 Render Index: $R_a=84.0$ CRI=80.7 TM30: $R_f=82$ $R_g=97$
 R1 =84 R2 =96 R3 =92 R4 =80 R5 =85 R6 =96 R7 =80
 R8 =60 R9 =21 R10=90 R11=80 R12=83 R13=87 R14=97 R15=77

Photo Parameters:

Flux = 608.1 lm Eff. : 114.09 lm/W $\Phi_e = 2.055 W$

Electrical parameters:

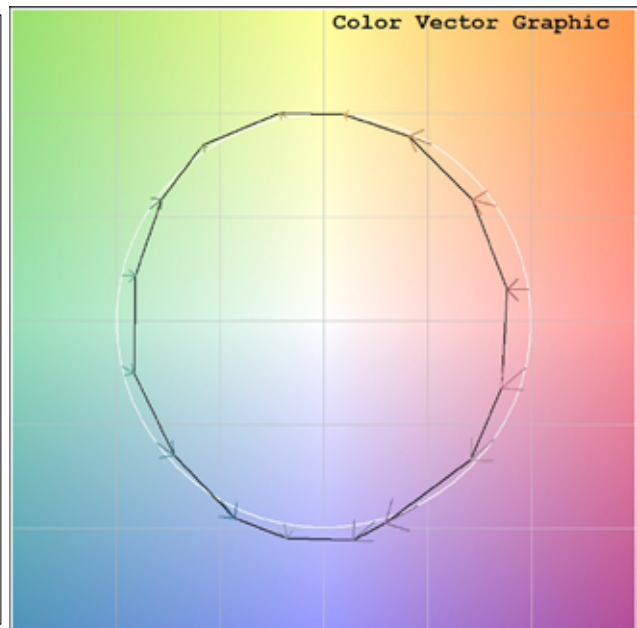
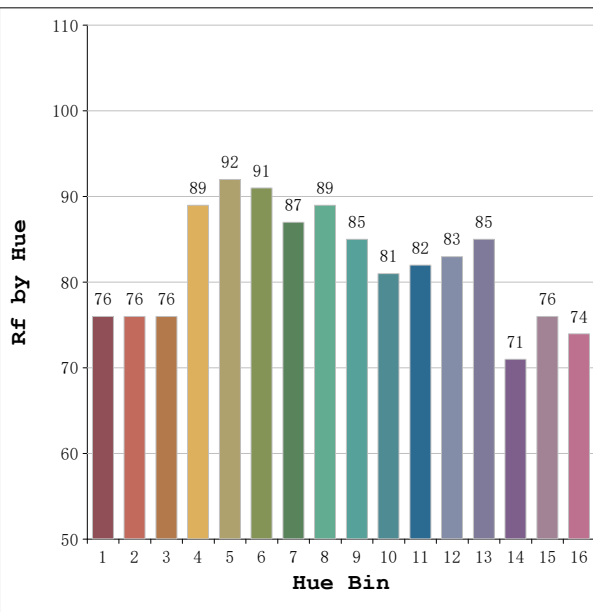
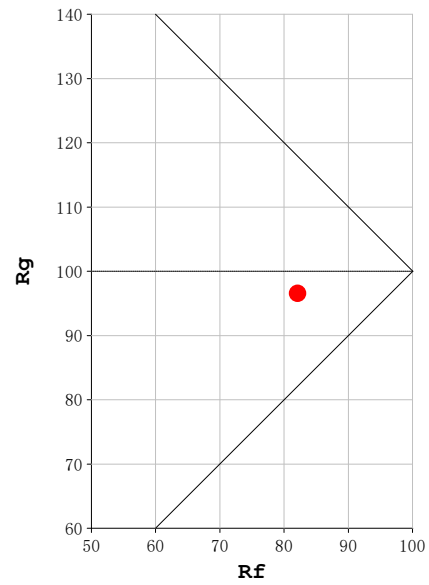
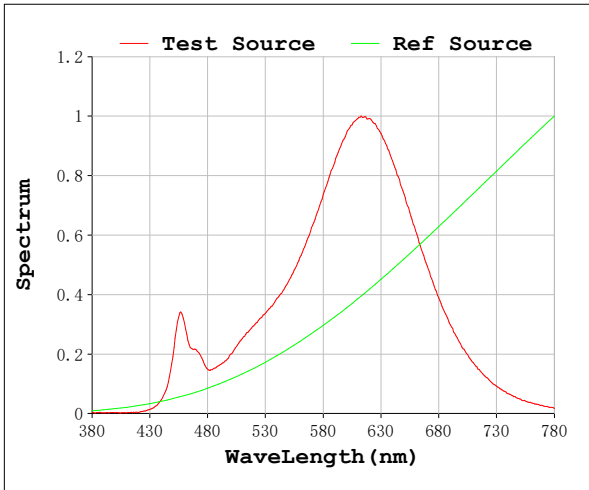
$V = 23.998 V$ $I = 0.2221 A$ $P = 5.330 W$ PF = 1.000

Status: Integral T = 1349 ms $I_p = 38248 (58\%)$

Model: Ecoled Élite 5 2400k
 Tester: Sergio Carneros
 Temperature: 20Deg
 Manufacturer: Luz Negra

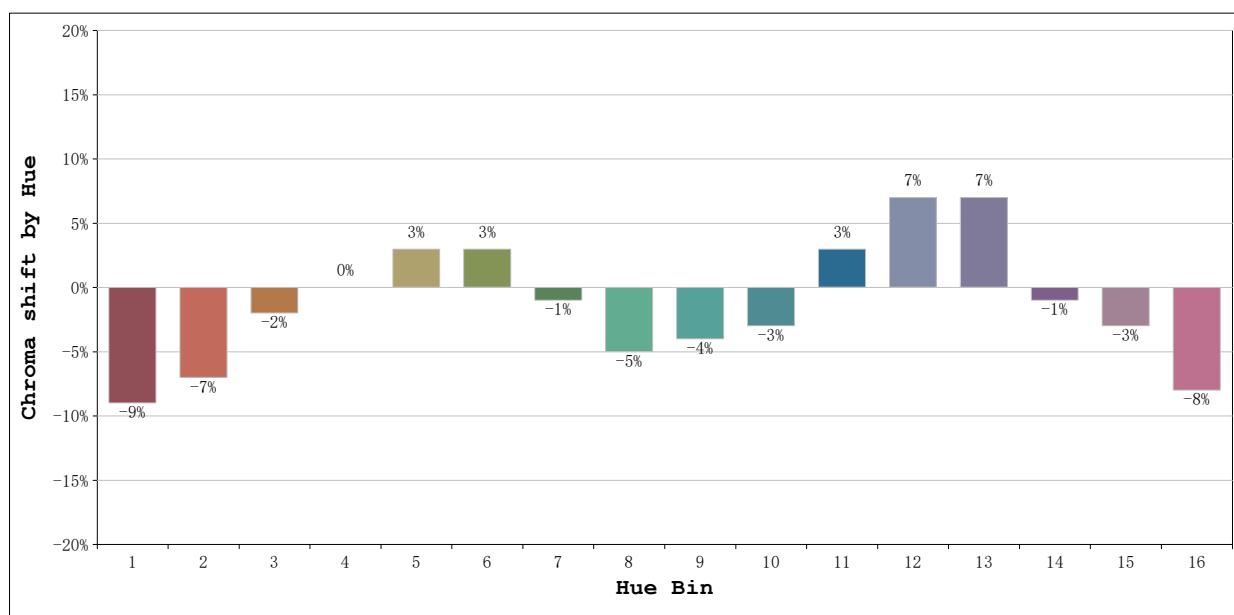
Number: 31.219
 Date: 2025-08-26 09:40:38
 Humidity: 50%
 Remarks: 100cm de tira flexible

Rf: 82 **CCT: 2358 K** **u': 0.2806**
Rg: 97 **Duv: -0.0025** **v': 0.5300**



Model:Ecoled Élite 5 2400k
Tester:Sergio Carneros
Temperature:20Deg
Manufacturer:Luz Negra

Number: 31.219
Date:2025-08-26 09:40:38
Humidity:50%
Remarks:100cm de tira flexible



			Graphic shift(%)	
Hue Bin	Hue Angle	Rf	Chroma	Hue
1	0.0° - 22.5°	76	-9	2
2	22.5° - 45.0°	76	-7	9
3	45.0° - 67.5°	76	-2	11
4	67.5° - 90.0°	89	0	5
5	90.0° - 112.5°	92	3	3
6	112.5° - 135.0°	91	3	0
7	135.0° - 157.5°	87	-1	-6
8	157.5° - 180.0°	89	-5	0
9	180.0° - 202.5°	85	-4	4
10	202.5° - 225.0°	81	-3	10
11	225.0° - 247.5°	82	3	10
12	247.5° - 270.0°	83	7	2
13	270.0° - 292.5°	85	7	-11
14	292.5° - 315.0°	71	-1	-17
15	315.0° - 337.5°	76	-3	-14
16	337.5° - 360.0°	74	-8	-11

Model:Ecoled Élite 5 2400k
Tester:Sergio Carneros
Temperature:20Deg
Manufacturer:Luz Negra

Number: 31.219
Date:2025-08-26 09:40:38
Humidity:50%
Remarks:100cm de tira flexible